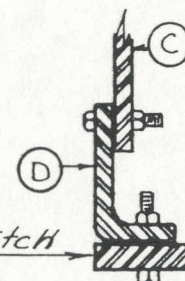


TOP VIEW OF WOOD FRAME SHOWING HOW TINES ARE HELD IN PLACE IN THE GROOVES. WHEN ASSEMBLING BE SURE THAT THE GROOVED SIDE OF THIS PIECE (WITH THE TINES IN PLACE) IS BOLTED UP TIGHTLY UNDER THE ANGLE IRON SUPPORTING RAIL.

NOTE

DO NOT DRAW BOLTS AT POINTS 1-2-3 TIGHT - SNUG ONLY - LEAVE ENOUGH PLAY SO THAT RAKE WILL RAISE FROM GROUND EASILY.



Rear Frame Hitch

REAR VIEW OF REAR FRAME HITCH SHOWING HOW CURVED SECTION OF LINK ("D") IS BOLTED TO HITCH

- 1-BOLT MAIN MOUNTING BRACKET "A" TO TRACTOR DRAWBAR.
- 2-BOLT SWIVEL MOUNTING "B" TO MAIN MOUNTING BRACKET AS INDICATED.
- 3-INSERT RAKE TINES IN GROOVED WOOD FRAME (SEE INSET.)
- 4-BOLT CURVED SECTION OF LINK ("D") TO REAR HITCH (SEE INSET.)
- 5-WHEN PROPERLY CONNECTED THE HAYRAKE WILL RAISE AND LOWER AUTOMATICALLY WITH MOTION OF DRAWBAR

HAYRAKE MOUNTING INSTRUCTIONS
883 TIGER TRACTOR